

Serial – USB Adapter



Chapter 1

Hardware Installation



Don't plug in the USB type A receptacle of the cable to the USB connector of your computer.

Chapter 2

Software Installation:

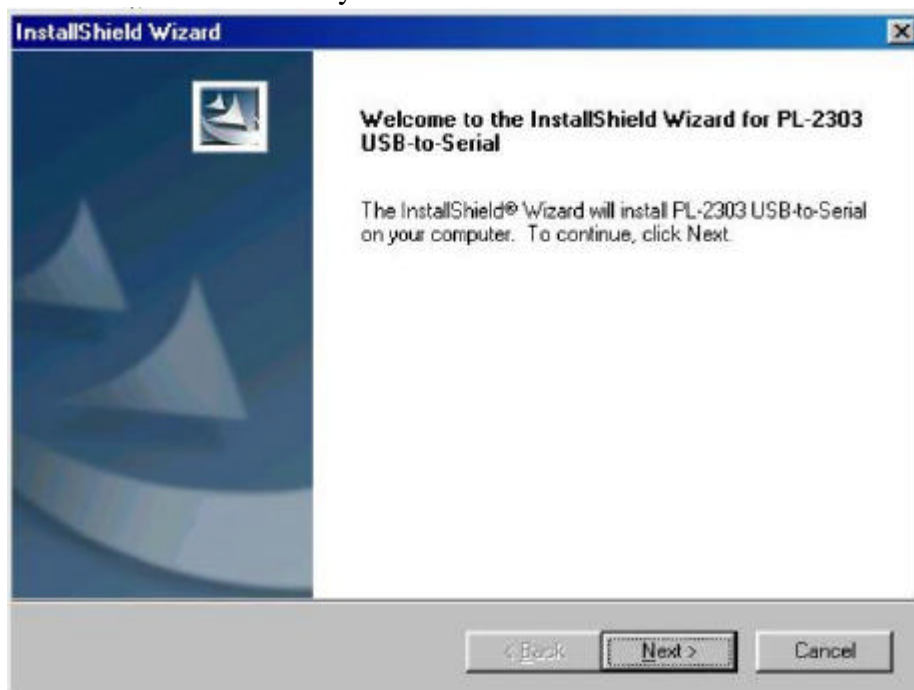
Place the enclosed the Igni-Power CD into the CD Rom. To search USB-driver install.



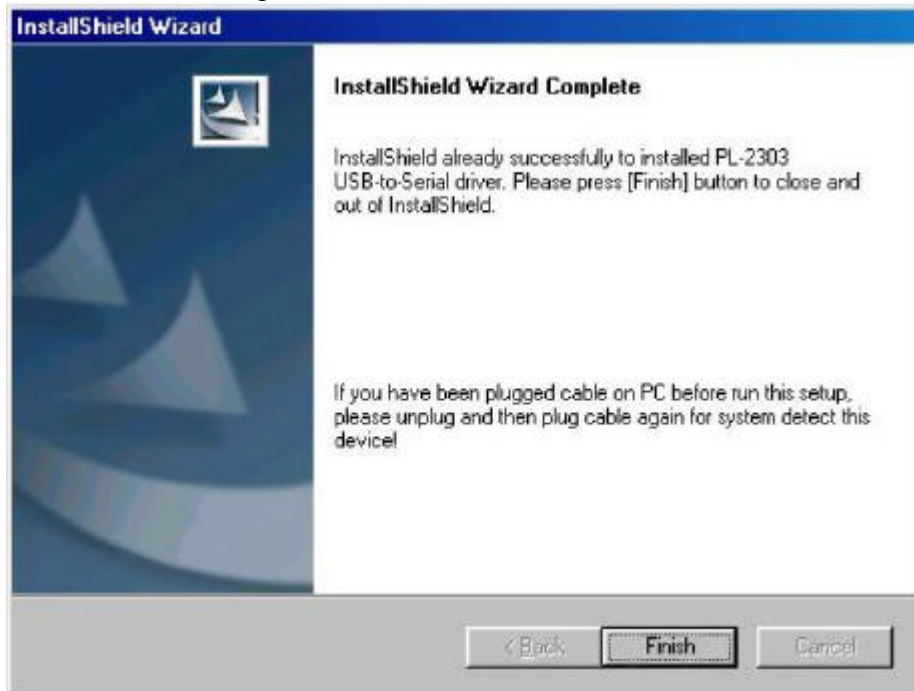
Chapter 3

Click of: USB-driver install

Select 'Search for the best driver for your device' and click "next"



Windows has finished installing the software, click “Finish” to close the Wizard.

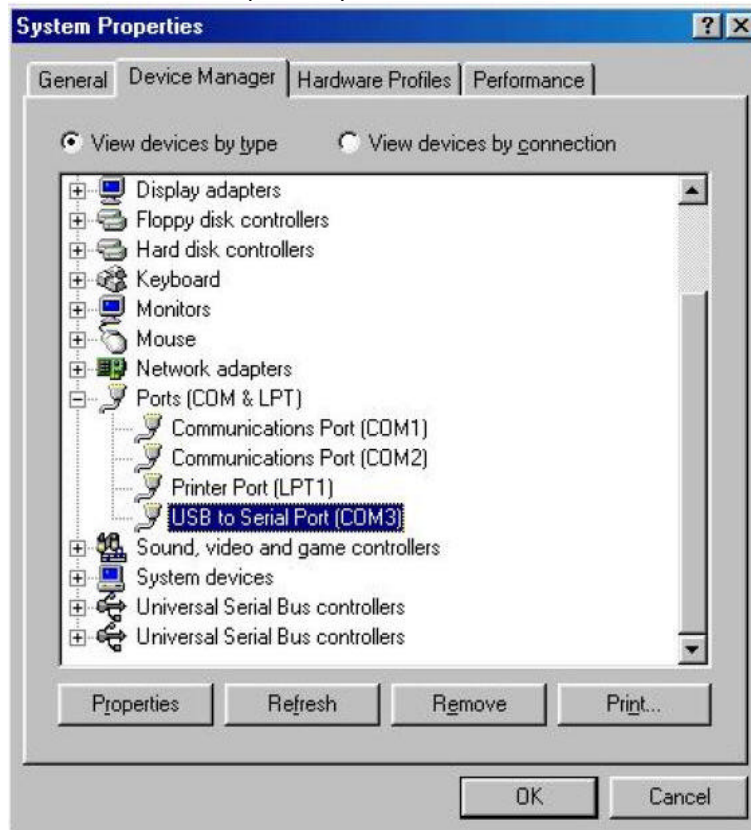


Plug USB to Serial Converter cable into your computer’s USB port.

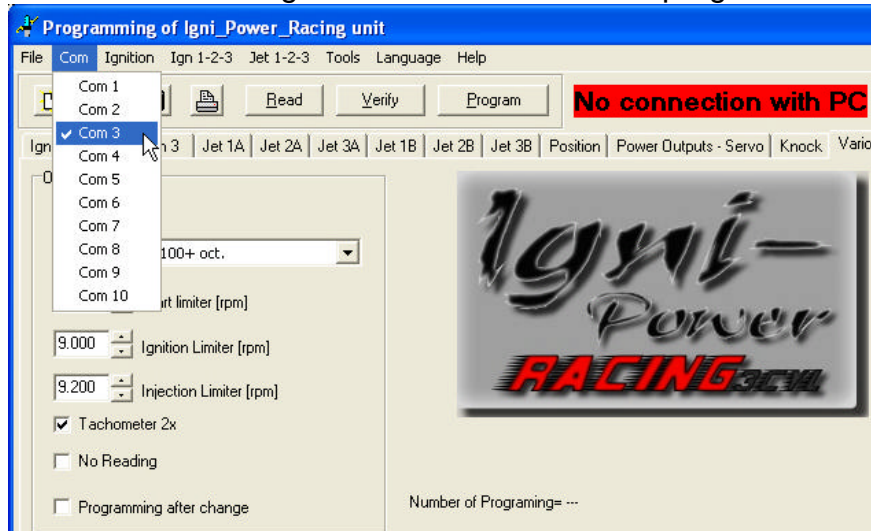


Open the device manager and check they which Com haven installed the system!

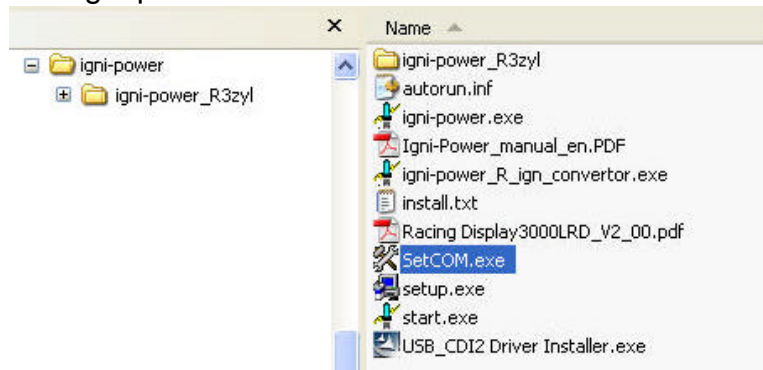
Open “Device Manager” under System Properties and check if there is the device you install under “ USB to Serial (Com3)”.



Choose the right **Com** connection in the program.



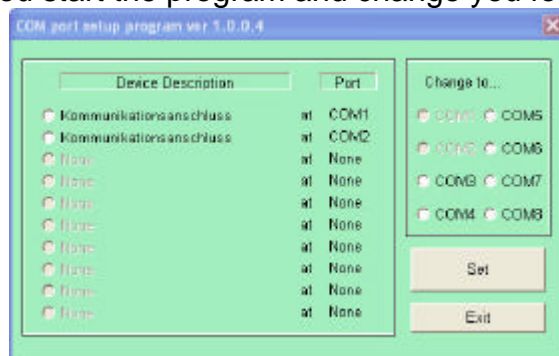
If you want to change the **Com** of the USB_RS232 adapter, start please the program **SetCom.exe** on the Igni-power CD.



The program is indicated in the Windows (border).



Please you start the program and change you for the Com.



FOR COMPETITION USE ONLY
No warranty of any engine damage

We wish you great success with your new Igni-Power.

www.igni-power.com