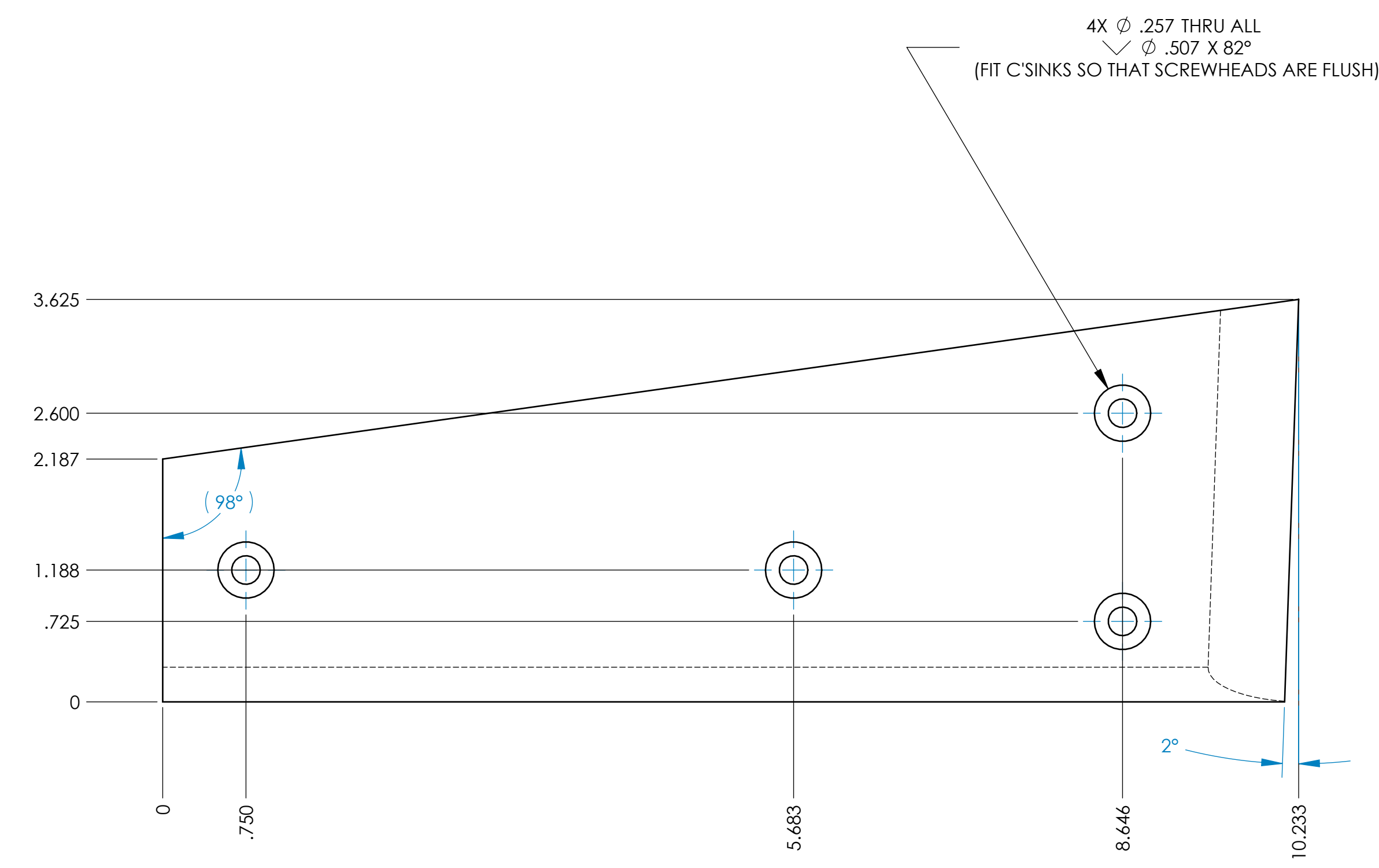
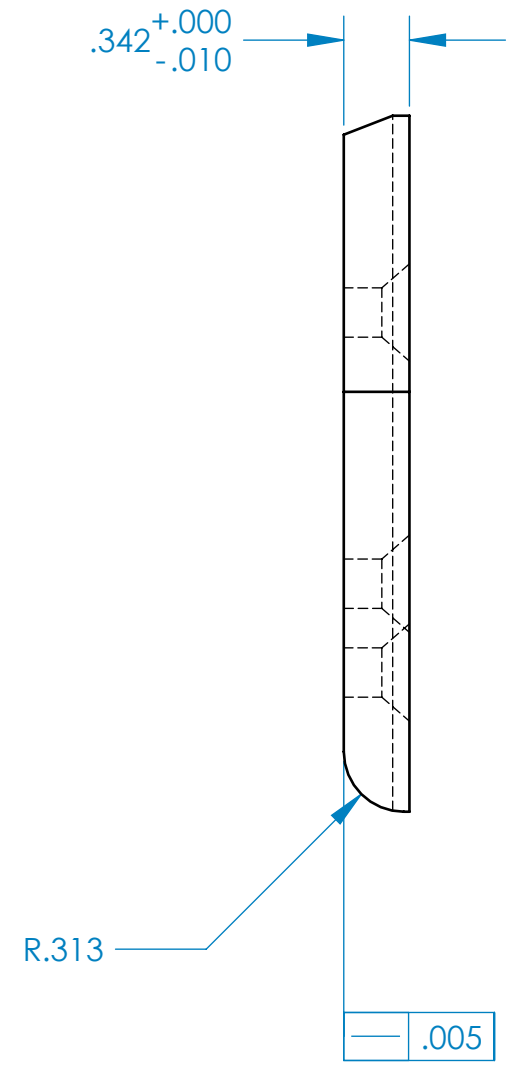
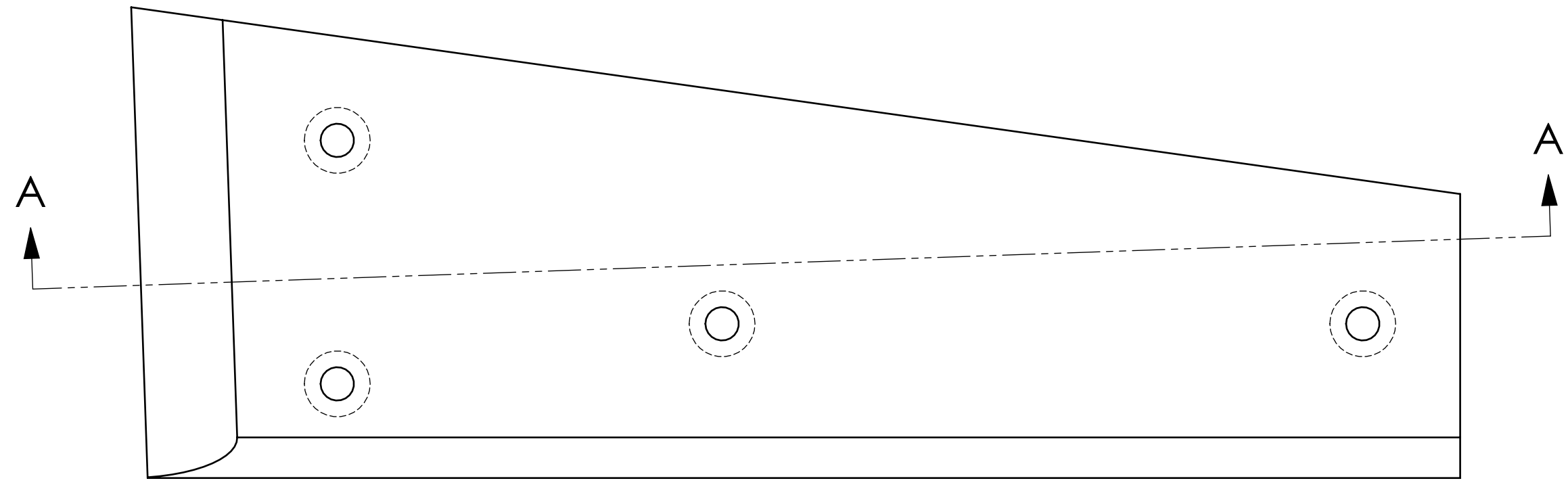
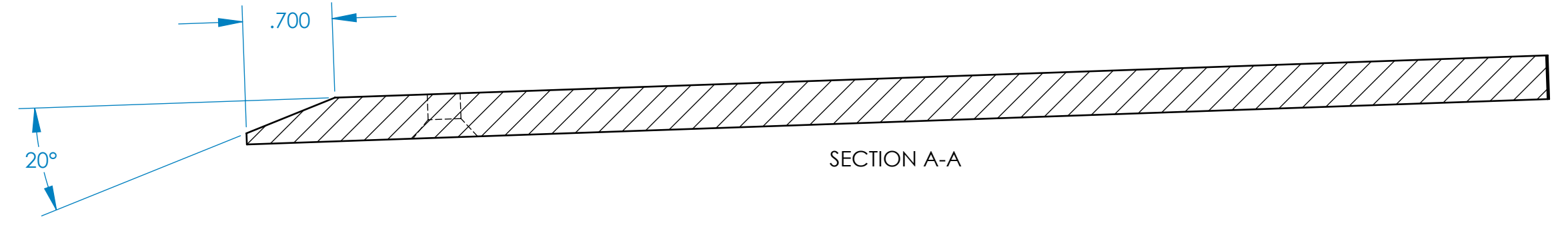
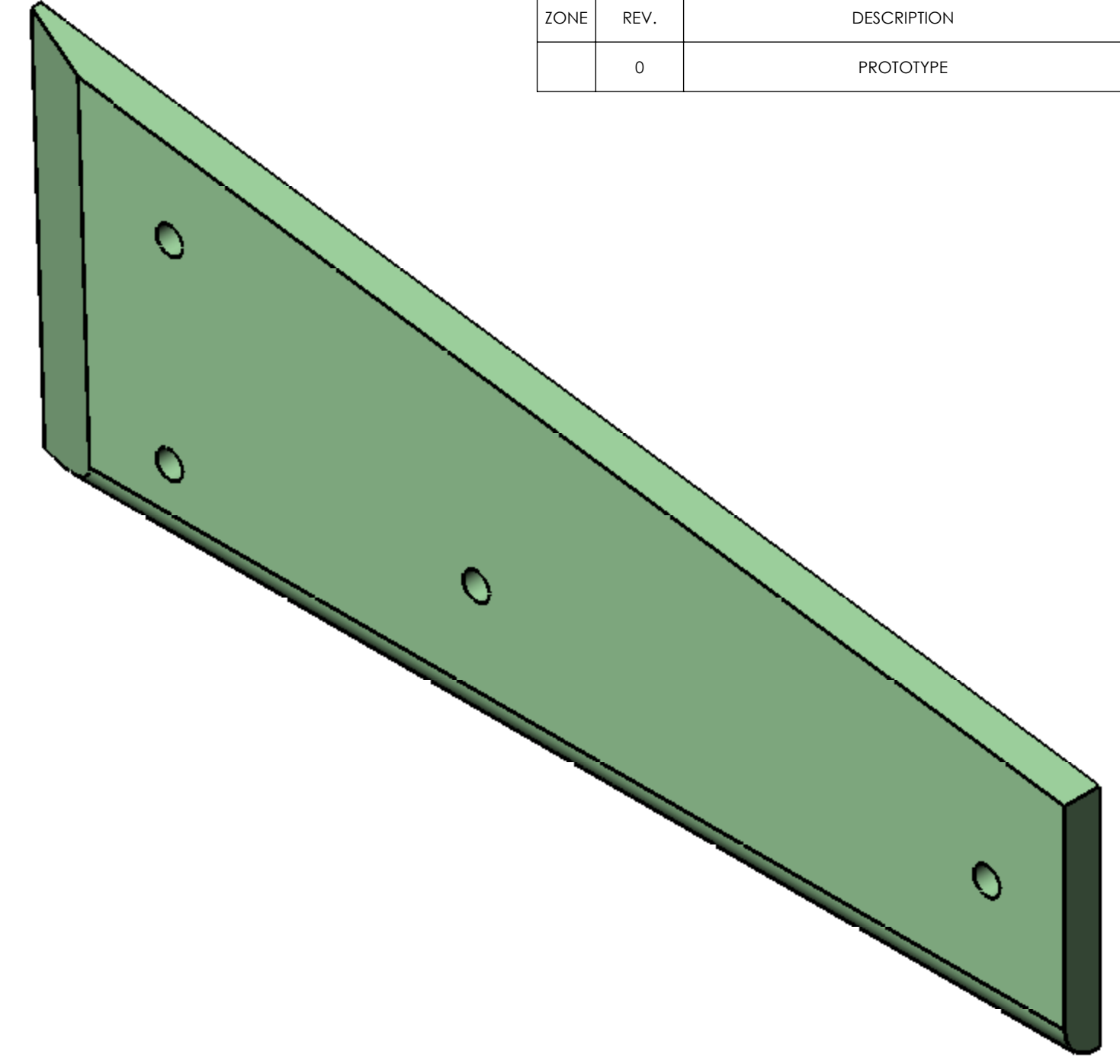


REVISIONS				
ZONE	REV.	DESCRIPTION	DATE	APPROVED
	0	PROTOTYPE	4/4/2007	DEK

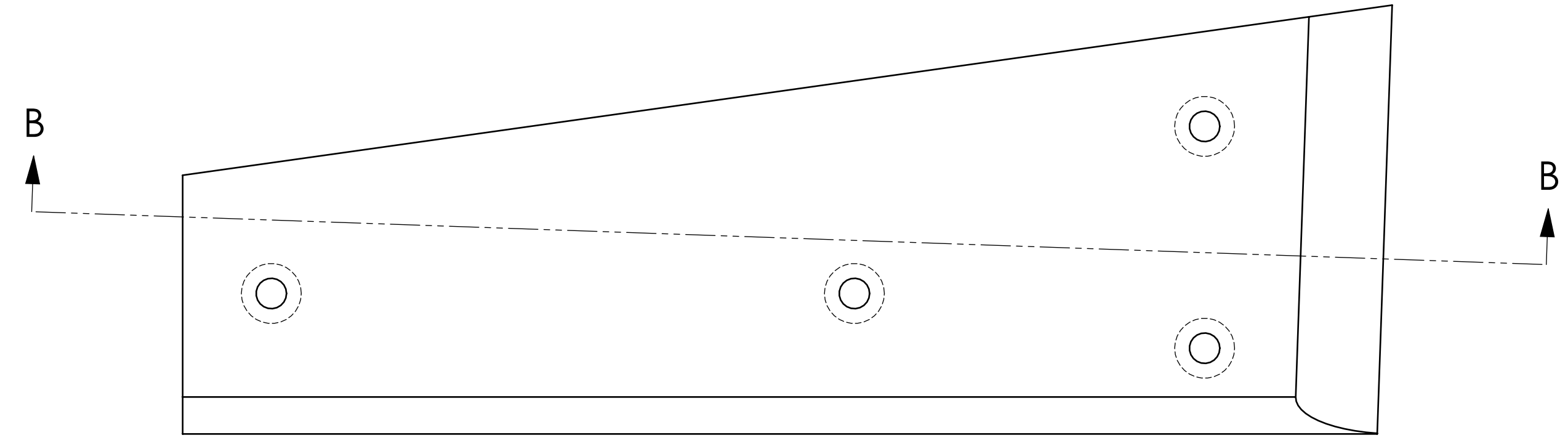
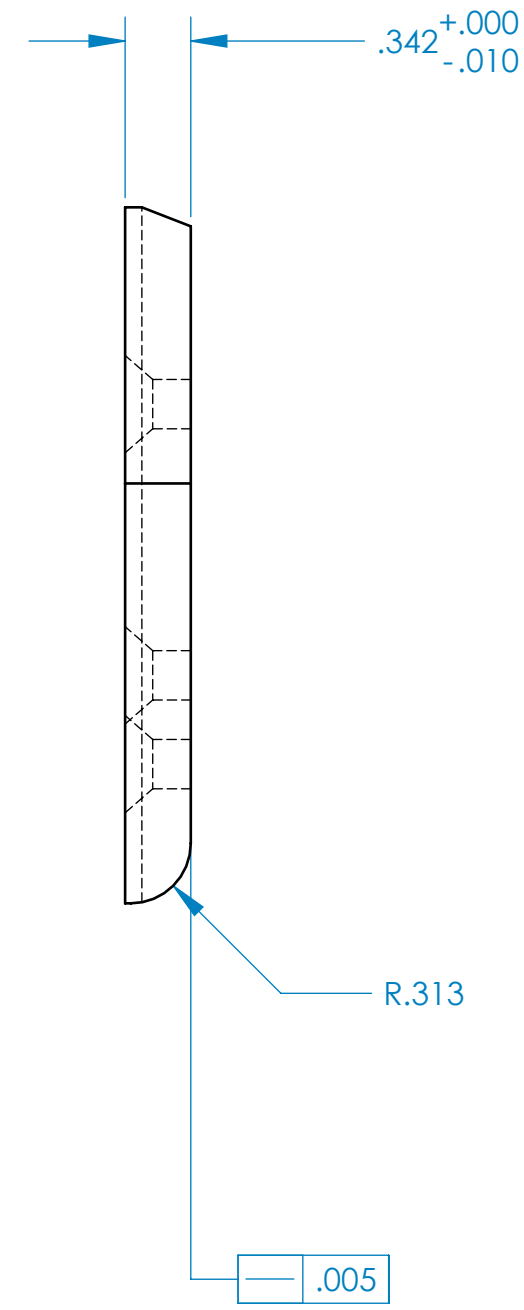
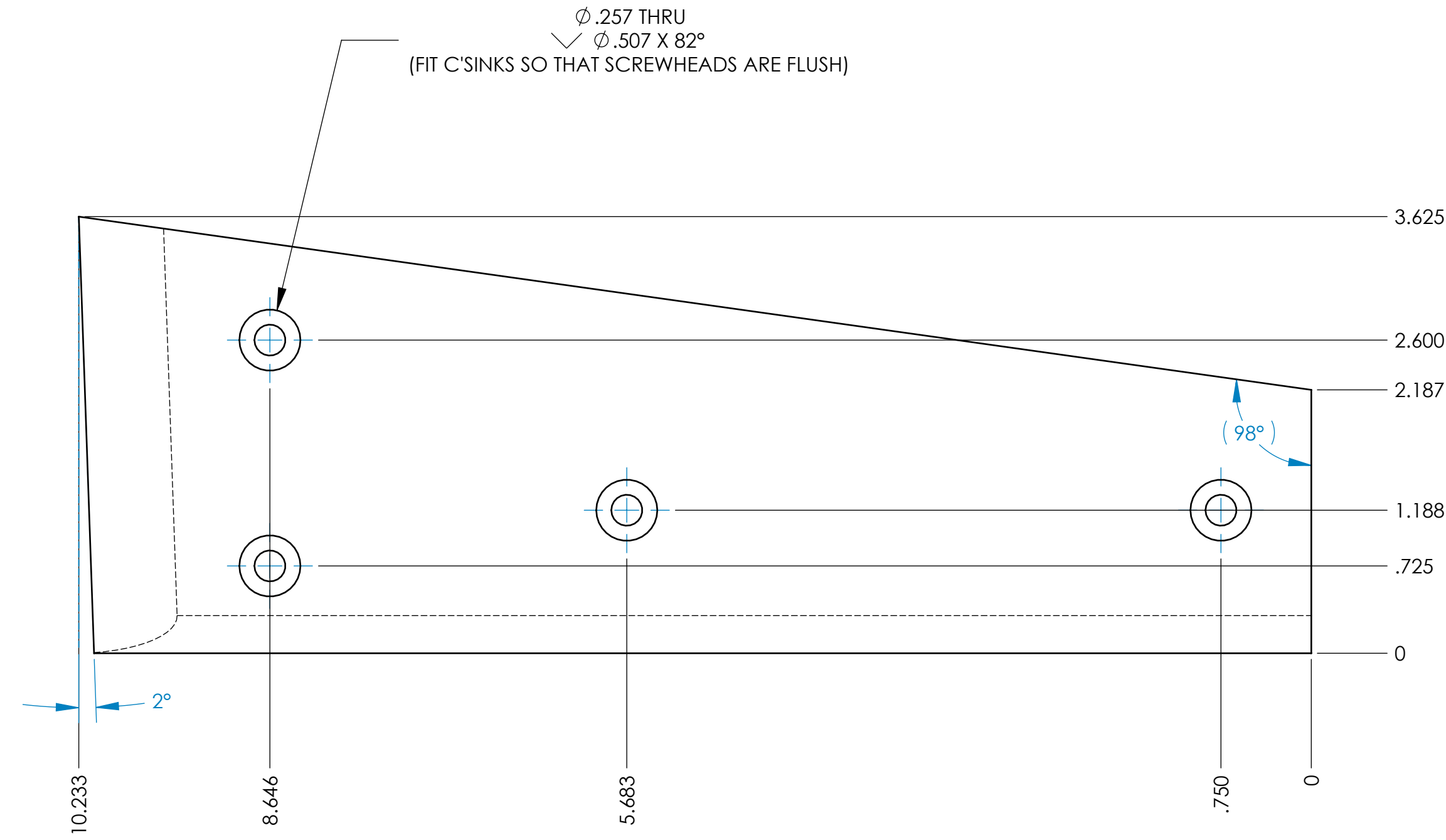
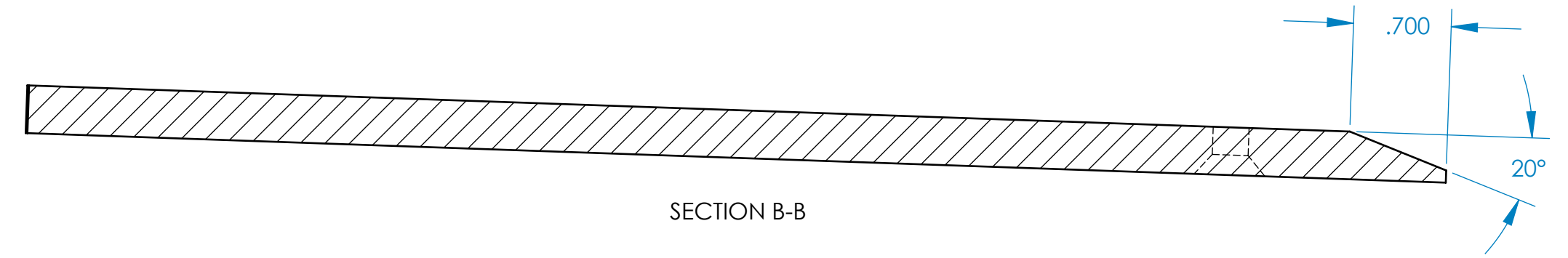
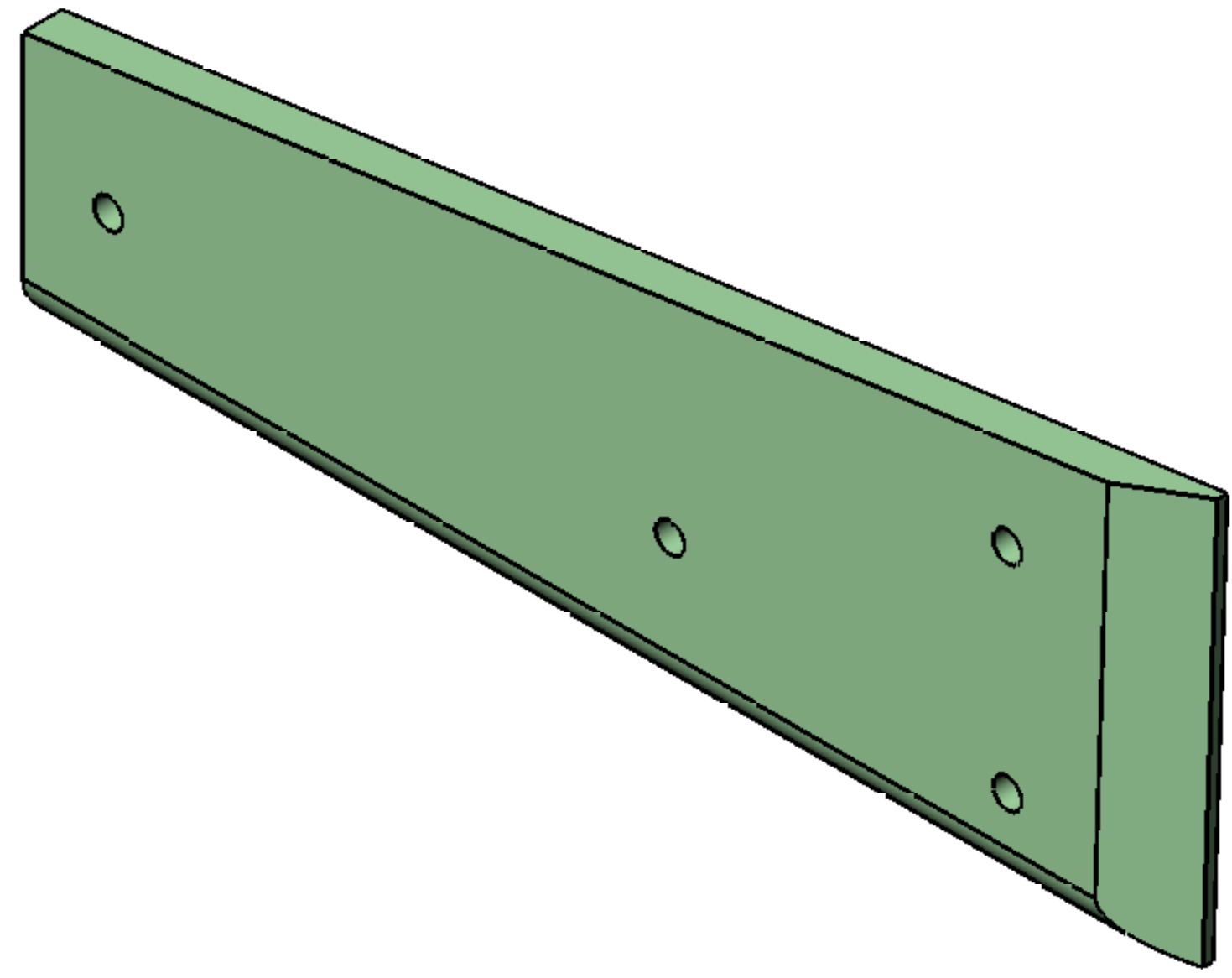
INSTALLATION INSTRUCTIONS

- 1) TABS USE STOCK HOLES IN HULL. THE HOLES IN HULL MAY NEED TO BE OPENED TO 1/4"
- 2) USE STAINLESS STEEL 1/4" FLATHEAD BOLTS WITH LARGE FENDER WASHERS OR A BACKER PLATE INSIDE THE HULL.
- 3) USE 1/4" X 20 STAINLESS STEEL NYLOC NUTS. APPLY NEVER SEIZE TO NUT THREADS TO PREVENT GALLING.
- 4) SEAL BOLT HOLES BY APPLYING 3M 5200 FAST DRY ADHESIVE AROUND EACH BOLT ON PLATE.

DISCLAIMER: WHILE I VERIFIED THE DESIGNS BY MAKING PROTOTYPES WHICH BOLTED UP PERFECTLY YOU ASSUME ALL RISK IN MAKING THESE.



UNLESS OTHERWISE SPECIFIED MACHINED DIMENSION LIMITS (INCHES)		CAD GENERATED DRAWING, DO NOT MANUALLY UPDATE	
XX +/- .001	XXXX +/- .005	APPROVAL	DATE
XX +/- .002	XXXXX +/- .005	DEK	3/10/07
HIGHLIGHTS IN YELLOW INDICATE DIMENSIONS NOT MACHINED SURFACES. DIMENSIONS IN RED INDICATE DIMENSIONS NOT SPECIFIED.		CHECKED	...
MATERIAL: 6061 ALUMINUM		97 GP1200 STOCK REPLACEMENT TRIM TABS	
HEAT TREATMENT		REV. D RH TRIM TAB	
NEXT ASSY USED ON		SCALE: 1:1 CAD FILE: 97 GP100 TRIM TABS SHEET 1 OF 2	
APPLICATION SURFACE TREATMENT: BLACK ANODIZE			



UNLESS OTHERWISE SPECIFIED MACHINED DIMENSION LIMITS (INCHES)		CAD GENERATED DRAWING DO NOT MANUALLY UPDATE	
XX +/- .04	XXXX +/- .005	APPROVALS	DATE
XX +/- .02	XXXX +/- .0025	DRAWN	
UNLESS OTHERWISE SPECIFIED DIMENSIONS OF MACHINED SURFACES SHOWN TO THIRDP DECIMALS SPECIFIED		CHECKED	
MATERIAL:			
HEAT TREATMENT:			
SURFACE TREATMENT:			
NEXT ASSY	USED ON	REV. LH TRIM TAB	
APPLICATION	SURFACE TREATMENT	SCALE: 1:1	CAD FILE: 97 GP100 TRIM TABS SHEET 2 OF 2